



Enrollment Study

**WORTHINGTON CITY
SCHOOL DISTRICT**

JANUARY 8, 2016

Prepared By:



Introduction

In January 2016, Warner Concepts, LLC., was asked to assist Worthington City School District in validating an enrollment projection report provided by the Ohio Facilities Construction Commission, dated October 22, 2015 and a by-school projection report submitted by FutureThink, dated November 9, 2015.

The Worthington City School District is in the process of evaluating their current and projected enrollment and its impact on growth and school facility capacity. The District is wrestling with decisions on how to best address the following district-wide needs:

- Changes in district population
- Variations in student attendance
- School facility capacities
- Aging school facilities

The purpose of this document is to provide an analysis of the enrollment documents received by the district and serve as a valuable planning tool in determining the future direction of the Worthington City School District.

Acknowledgement

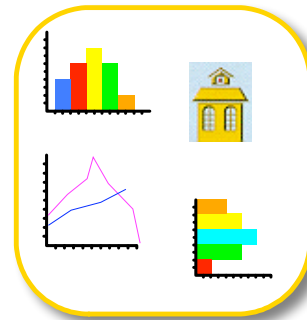
Warner Concepts, LLC. wishes to thank Worthington Schools for the opportunity to provide this study and is ready to assist the district in its future decision making process.



Enrollment Projection Methodology

Projecting student attendance is both a science and an art. The “science” is in the mathematical analysis of data collected from various sources such as:

- Local, State, National Demographics
- Number of school age children
- Live birth counts - 15 years
- Historic enrollment - 10 years
- Community and home school
- Student migration and open enrollment
- Cohort survival ratios
- Housing and sub-division starts
- “Roll over” in housing occupants
- Attendance Boundaries
- “Culture” of community

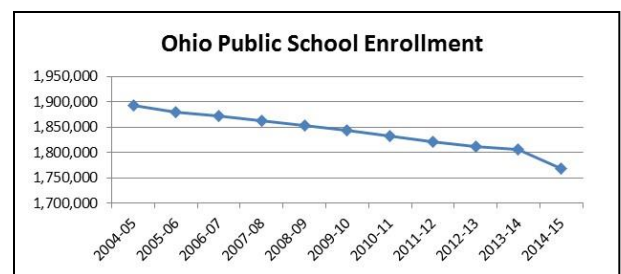


The factors listed above are representative of “typical” types of data collected. Additional factors affecting student enrollment may also be considered.

The “art” of enrollment projections is the ability and experience of understanding the type and accuracy of the data collected and its impact on student enrollment. For example, an increase in housing does not necessarily result in an increase in student enrollment. Why?

The ever changing structure of the family unit is one factor. The “nuclear” family was two parents and two children. Many of today’s family units are made up of a single parent and one child. Or a grandparent and a child. Or two adults and no children.

Enrollment projections are a blend of data collected, calculations, and the application of knowledge and experience.



FutureThink, October 22, 2015, page 4

Summary of Findings

Following is a summary of each of the factors considered in this study. It is recommended that the district continue to monitor each of these factors on an annual basis to determine their impact on student enrollment.

Local, State, and National Trends in Enrollment

As shown in the reports, many of the factors considered when projecting student enrollment are declining. As the US population ages, there is a decline in live births which results in a decline in school enrollment.

A statement made about State of Ohio school districts: “Out of 610 school districts, only 94 gained enrollment from the 2006-07 to the 2015-16 school year.” [FutureThink, Oct. 22, 2015, page 6].

Warner Concepts has noted similar changes in student enrollment throughout Ohio and the US.

Historic Enrollment

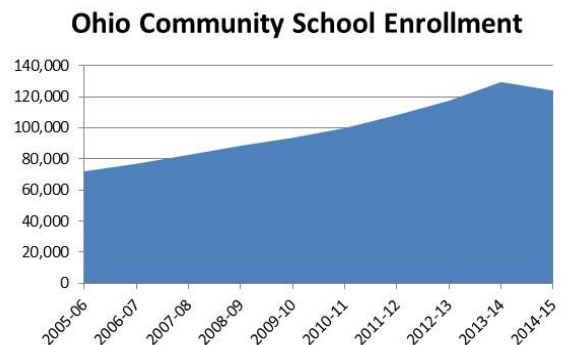
FutureThink’s report shows that the District’s historic enrollment has increased in the last 4 years after a decline of 4 years. This has resulted in a 10 year growth of 607 students.

Community School Enrollment

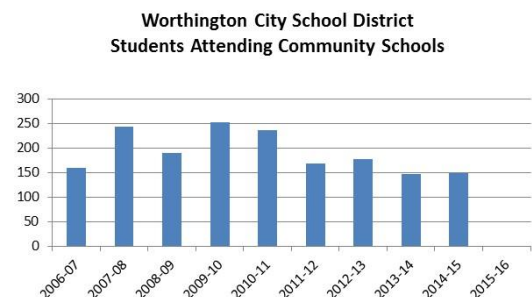
Worthington Schools has experienced a decline in community school enrollment while state-wide there has been an increase. This suggests that because of the quality of education available, students are enrolling in Worthington Schools in lieu of their local community school.



FutureThink, October 22, 2015, page 12



FutureThink, October 22, 2015, page 14



FutureThink, October 22, 2015, page 15

Worthington City School District Enrollment Study

Open Enrollment

By comparing the number of students coming into the district with those leaving, find a net loss of students. In 2015 there was a net gain of 21 students. Open enrollment can be an important factor affecting student enrollment, however the number of students is quite low.

Live Births

The methodology used in FutureThink's report was to take a percentage of the live births from zip code areas included in the school district's boundaries. The percentage applied was based on the students attending from each area. While this method is not exact, it is an accepted process for analyzing the number of babies that attend school 5 years later.

It is important to note that live birth counts are compiled by the Ohio Department of Health, Statistical Analysis Unit and are often 1-2 years behind.

Additionally, live birth counts are not always an exact value due to the various reporting methods used by hospitals and medical establishments.

Using live birth percentages from zip code areas is an accepted method for determining future student enrollment.

It should be pointed out, that if more accurate data is available, further study should be regarding live birth counts.

Worthington City School District
Live Birth Count by Zip Code
1999-2013

Year	43016	43065	43081	43085	43229	43235	Total # of Live Births	Total # of Live Births Used
1999	295	370	732	265	738	460	2,860	1,463
2000	296	469	701	325	843	437	3,071	1,605
2001	310	456	676	264	838	452	2,996	1,554
2002	361	481	675	257	843	397	3,014	1,497
2003	361	542	654	235	858	451	3,101	1,544
2004	419	522	650	230	810	421	3,052	1,461
2005	398	525	620	268	801	409	3,021	1,478
2006	465	570	668	276	935	439	3,353	1,650
2007	494	477	699	306	907	479	3,362	1,692
2008	495	505	702	316	887	467	3,372	1,670
2009	497	441	697	288	930	497	3,350	1,715
2010	519	489	711	312	904	515	3,450	1,731
2011	521	434	769	292	913	508	3,437	1,713
2012	589	428	733	301	897	573	3,521	1,771
2013*	617	441	803	322	946	601	3,730	1,869

Source: Ohio Department of Health, Statistical Analysis Unit

*preliminary

FutureThink, October 22, 2015, page 19

Worthington City School District Enrollment Study

Population Shifts

Shifts in population are another factor considered in the report. The decline in median age, changes in job status, family unit changes, and population migration all have an affect on student population.

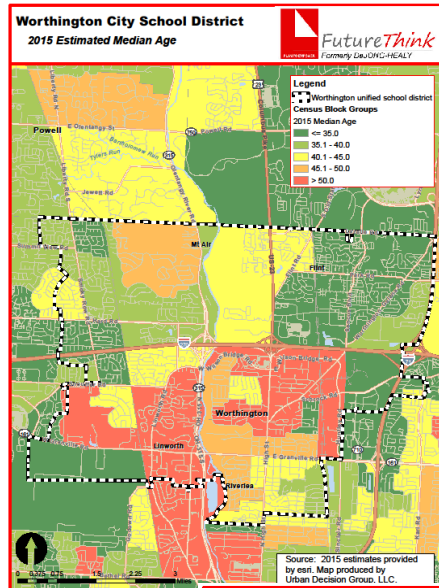
District maps included in the report indicate an increase in district population and a decline in the median age. Comparing the maps illustrating these two factors indicates that student enrollment may be stable or have slight growth due to changes in age and population migration.

Housing

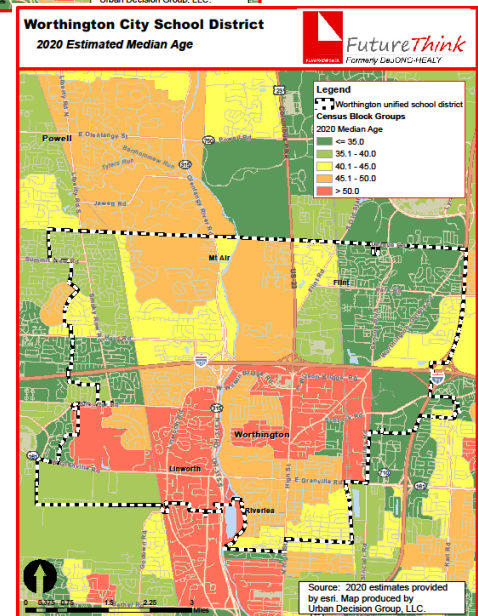
Changes in the number of new single family homes can affect enrollment. FutureThink's report indicates a small number of permits have been issued in Worthington City. [Refer to table below]

Based on our discussion with District administrators, Worthington Schools is experiencing a change in the family unit in previously constructed housing. Mature families are moving out and younger families, with children, are moving in.

It is important to note that because of the decline in the size of a family unit, it takes a higher number of new homes to affect student enrollment. The District should continue to monitor this factor.



FutureThink,
October 22,
2015, page 28
& 29



of Building Permits Issued for Single Family Dwellings

Year	Worthington City	Columbus City	Dublin City	Powell City	Westerville City	Franklin County
2004	1	2,687	457	209	63	5,220
2005	0	2,360	375	216	68	4,446
2006	0	1,223	253	138	47	2,707
2007	5	1,008	131	94	65	2,094
2008	1	686	70	41	38	1,286
2009	1	852	67	32	45	1,464
2010	3	716	82	34	69	1,628
2011	2	667	69	45	38	1,200
2012	4	723	149	50	29	1,372
2013	2	770	146	68	4	1,497
2014	3	724	202	104	7	1,672
2015*	3	471	60	34	6	965

Source: SOCDs Building Permits Database
* through August 2015

FutureThink, October 22, 2015, page 32

Executive Summary

In summary, the following conclusions can be drawing:

- Both reports reflect the use of data collected from the district as well as local, state and national demographic factors. The reports reflect a “snap shot” of the current state of the district and is an acceptable method for projecting enrollment.
- “Best practices” in enrollment projection methodologies were used by an experienced and knowledgeable expert in the field.
- The conclusions reached represent an understanding of the factors considered and their affect on student enrollment.
- The projected increase in student enrollment of 624 students over the next 10 years is a reasonable projection based on the information available.
- If additional data becomes available or if changes in the factors considered change, then modifications to the projections should be considered.

Recommendations

The recommendations derived from this study is that the district embrace the following:

- It is recommended that these two reports be recognized to be valid and should be used as planning tools for both district-wide and school specific decision making by the District.
- If additional data becomes available, the District should would review the results of the studies to determine if modifications need to be made.
- The District should review the results on an annual basis to determine any impact on student enrollment.

Worthington City School District
Projected Enrollment

Grade	2015-16 Actual	2016-17	2017-18	2018-19	2019-20	2020-21	2021-22	2022-23	2023-24	2024-25	2025-26
Pre-K (special needs)	106	125	129	136	132	130	130	130	130	130	130
K	733	729	753	795	774	757	757	757	757	757	757
1	774	763	758	783	827	805	788	788	788	788	788
2	818	782	770	765	791	835	813	795	795	795	795
3	823	820	783	771	766	792	836	814	796	796	796
4	761	819	815	778	767	761	787	831	809	792	792
5	698	761	818	814	777	766	761	786	830	808	791
6	729	700	763	820	816	779	768	762	788	832	810
7	719	735	705	768	826	822	785	773	768	794	838
8	711	721	736	706	769	827	823	786	775	769	795
9	762	725	735	750	720	784	843	839	801	789	784
10	735	755	718	728	743	713	777	835	831	794	782
11	632	611	628	597	605	618	593	646	694	691	660
12	633	626	605	621	591	599	611	587	639	687	684
Pre-K - 12 Total	9,634	9,672	9,716	9,832	9,904	9,988	10,072	10,129	10,201	10,222	10,202
Ungraded	25	17	17	17	17	17	17	18	18	18	18
Career Tech Comprehensive - Low Bay	98	128	128	126	124	126	125	128	138	143	139
Career Tech Off-Site	50	66	66	65	64	65	64	66	71	73	72
Grand Total	9,807	9,883	9,927	10,040	10,109	10,196	10,278	10,341	10,428	10,456	10,431

Source: FutureThink